

Amelia McDonnell, '22.

Faculty Advisor: Professor David Karen, Social Justice and Social Change

Field Supervisor: Megan Richardson, Senior Project Manager, Division of Teaching & Learning

Background: The Division of Teaching and Learning (DTL) is housed within the Research and Evaluation Group at the Public Health Management Corporation. The DTL aims to **address educational inequality** through the improvement of preschool through postsecondary education. In undertaking this endeavor, the DTL partners with clients to conduct research that **empowers community-based programs and informs policy.**



DATA AND RESEARCH

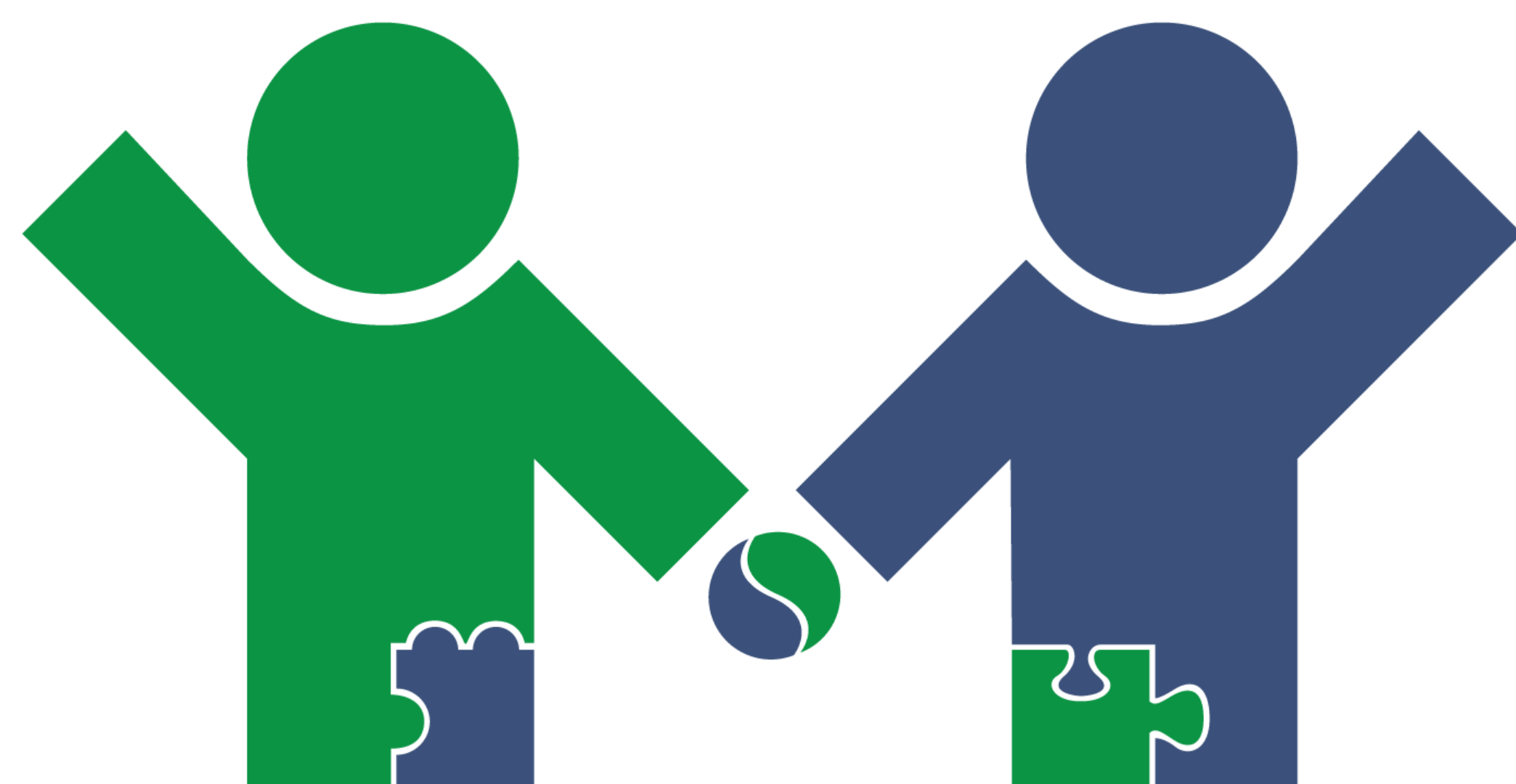
intervention
experience analysis development
health movement equity impact
transparency justice data education
evidence-informed
accessible evaluation
knowledge qualitative
responsibility research
positive opportunity

This semester at PHMC I have:

- Supported mixed-methods educational research across different projects through data analysis.
- Assisted with the preparation of progress reports, data requests, needs assessments, and presentations.
- Learned techniques and strategies of analyzing and visualizing qualitative and quantitative data.

Overarching Questions:

- How can statistics be utilized as a “science of social justice”?
- How can initiative-centric evaluations advance social justice?
- What are the barriers to scaling up initiatives to public policy?



BRYN MAWR
COLLEGE